

# E-FORUM: MANAGING PANDEMIC CHALLENGES AND OPPORTUNITIES OF TVET IN THE ERA OF DIGITALISATION

IN CONJUNCTION WITH THE 32<sup>ND</sup> SEAMEO VOTTECH GOVERNING BOARD MEETING

**28 OCT**  
THURSDAY

**9.00AM - 5.00PM**  
BRUNEI TIME (GMT +8)

**VIRTUAL**  
VIA ZOOM & YOUTUBE



SEAMEO VOTTECH

"Preparing TVET for Industry 4.0"



## BRUNEI DARUSSALAM COUNTRY LEVEL RESPONSE IN MANAGING PANDEMIC CHALLENGES & OPPORTUNITIES OF TVET IN THE ERA OF DIGITALISATION

**ZAMRI SABLİ**  
CEO / DIRECTOR



### Question #1

What did your country or institution do to **Manage the Continuity** of TVET and **Stay Relevant**?



Hallmark of TVET



Manage Continuity



Challenges TVET during Pandemic



Stay Relevant



## HALLMARK OF TVET

Exceptional emphasis of TVET on **work-based learning** and acquisition of **practical skills**.

In most TVET programmes, practical training is a critical dimension and one that is not easily deliverable through remote modalities for many occupations.



## TVET Challenges due to COVID 19

01 Technological infrastructure: internet, connectivity and devices

02 Lack of effective and user-friendly distance learning platforms

03 Lack of staff capacity to support distance learning through quality pedagogical resource

04 Mental Health and wellbeing issues



# Manage Continuity

Communication plan is imperative



## IBTE PRESS RELEASE ON COVID-19

28 Mac 2020 Press Release Covid 19 IBTE

### SIARAN AKHBAR

Dalam usaha bersama membendung risiko jangkitan CoVID-19 di negara ini, Institut Pendidikan Teknikal Brunei (IBTE) dengan ini memaklumkan kepada orang ramai mengenai penutupan sementara kaunter-kaunter pertanyaan Am, urusan kewangan, urusan pendaftaran dan sebagainya di Ibu Pejabat dan Kampus-Kampus IBTE termasuk Bahagian Pendidikan Lanjutan dan Latihan (CET) sejak 19 Mac 2020 sehingga satu tarikh yang akan dimaklumkan kemudian. Sementera itu, bagi memastikan kesihatan dan keselamatan pelajar-pelajar adalah terjaga dan terhindar dari sebarang kemungkinan jangkitan, pihak IBTE juga ingin memaklumkan bahawa sesi pengajaran dan pembelajaran bagi semester ini akan dikendalikan secara dalam talian (online) bermula pada hari Isnin 30 Mac 2020.

Untuk makluman, pihak IBTE juga telah mengaktifkan Business Continuity Plan (BCP) bagi menjaga kesejahteraan tenaga pengajar serta warga IBTE dengan memberi kelongoran bagi mereka yang termasuk dalam kategori vulnerable seperti yang dinyatakan oleh Kementerian Kesihatan untuk bertugas dari rumah kediaman masing-masing (Work From Home – WFH) atau melalui kaedah flexible working arrangement seperti yang dinyatakan di dalam Surat Keliling Jabatan Perdana Menteri bilangan 6/2020.

Sebarang pertanyaan dan maklumat lanjut, orang ramai adalah disarankan untuk menghubungi nombor-nombor

Tempat	No Telefon
Ibu Pejabat IBTE	242 5555
Bahagian Kewangan	245 4446 / 245 4447 / 242 5390
Pejabat Pendaftaran	245 7104 / 242 2306
Bahagian Pendidikan Lanjutan dan Latihan (CET)	242 2493 / 242 2290
IBTE – Kampus Sultan Saiful Rijal	234 3532 / 233 1077
School of Aviation, IBTE – Kampus Sultan Saiful Rijal	234 2614
IBTE – Kampus Bisnes	245 2113
IBTE – Kampus Nakhoda Ragam	239 0423
IBTE – Kampus Mekanikal	247 0124
IBTE – Kampus Jefri Bolkihah	333 5802
IBTE – Kampus Sultan Bolkihah	322 8050

Pihak IBTE juga boleh dihubungi melalui:

- Email : [enquiry@ibte.edu.bn](mailto:enquiry@ibte.edu.bn)
- Email (pendaftaran) : [twicas@ibte.edu.bn](mailto:twicas@ibte.edu.bn)
- Website : <https://ibte.edu.bn>
- Facebook: Brunei Technical Education
- Instagram : [ibteignite](https://www.instagram.com/ibteignite)

Sebarang kesulitan yang dihadapi adalah amat dikesali dan pihak IBTE memohon maaf atas perkara ini. Dikesempatan ini, IBTE mengucapkan terima kasih atas kerjasama orang ramai dalam mematuhi larangan dan mempraktikkan penjarakan sosial.



# Business Continuity Plan (BCP)

Business Continuity Plan is a resilient strategy to retain the ability

- to operate to achieve its strategic key objectives;
- to re-operate at acceptable level
- to manage disruptions in confidence

## Matrix of De-escalation Stages

In an effort to better mitigate the potential risks and safeguarding Technical and Vocational and Higher Education Institutions (TVET & HEIs) community against COVID-19, Ministry of Education is committed to ensure the reopening protocol of campuses to be observed properly.



# De-escalation Plan

### Reopening Protocol

#### Operational Readiness Level 1

- Temperature taking** upon entry to the campus. Visitors entering the campus are to be given an identification sticker after getting his/her temperature checked.
- Students and staff must scan the QR code** from BruHealth App every time they enter or exit the school premises, allowing authorities to track potential carriers of COVID-19.
- Staff and students are to record their attendance and their temperature readings** in the log book before entering class, lab, workshop, etc. Those who are showing sign of illness or symptoms are not allowed to enter the class, lab and workshop.

**NOTICE**

Users who do not have access to BruHealth app:

i) will have to fill in a declaration form, or  
 ii) perform a self-assessment through the website:  
[www.health.gov.sg](http://www.health.gov.sg)  
 (You'll need to complete the registration)  
 \*Campus to provide PCLaptop

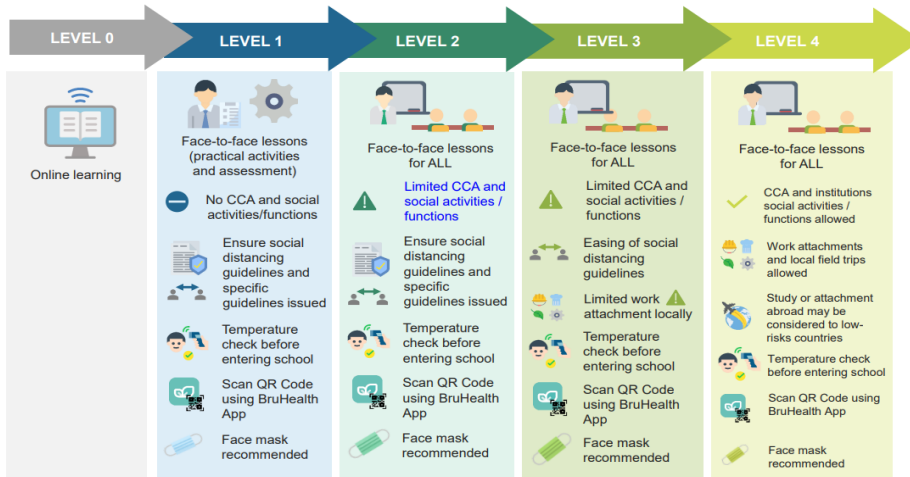
- To provide hand sanitiser at every checkpoints** and common areas such as Library, Staff and Student Centre, Lecture Theatres, Laboratories, Workshop, Café, Canteen, etc.
- Face-to-face practical work** are resumed and conducted in a **staggered manner** to minimize number of students per session, subject to the arrangement made by respective institutions. The institutions could assign specific number of students according to the class size such as by setting a **limit to 20% of usual capacity**.
- Classes or lectures can still be conducted online** based on the respective institutions' online learning policy.
- The number of staff and students in the common areas** such as library, student café should continue to be monitored and controlled by limiting to 20% of the usual capacity.



**E-FORUM: MANAGING PANDEMIC CHALLENGES AND OPPORTUNITIES OF TVET IN THE ERA OF DIGITALISATION**

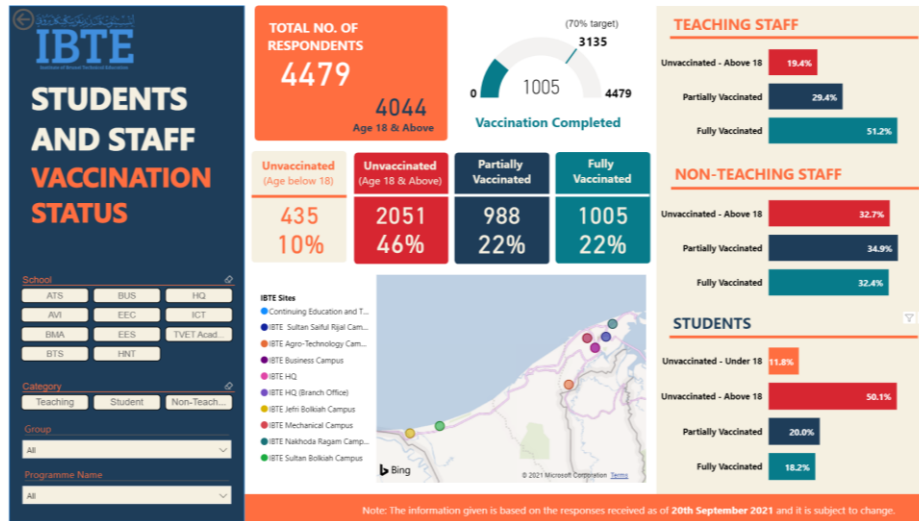
## Matrix of De-escalation Stages

This matrix of operation is applicable to all schools in the de-escalation process during the outbreak of COVID-19



**E-FORUM: MANAGING PANDEMIC CHALLENGES AND OPPORTUNITIES OF TVET IN THE ERA OF DIGITALISATION**

# Vaccination Status



## Stay Relevant



Working closely with industry partners for the implementation of

- Industrial Placement
- On-the-Job Training (OJT)
- Apprenticeship

- As scheduled with SOP in place
- Reschedule
- Reassignment for affected companies



# Stay Relevant

Continued focus on ensuring acquisition and development of foundational cognitive and socioemotional skills, such as [empathy and resilience](#), which have become increasingly valued in the current circumstances, will improve employability and other human development outcomes for TVET students.

IBTE STARS is a point-based enrichment programme to provide incentive for students to

- strive towards co-curricular excellence
- enhance their sense of social responsibility
- take ownership of their personal development
- empower themselves through leadership roles



## Question #2

What **Opportunities presented during the Pandemic were Promising and which was seized** in your country or institution?



Learning Platform



Collaboration with Partners



PPP



Continuous Professional Development



# Learning Management System (LMS)

The use of LMS as a platform for online learning enables students to access educational content at any time and will reduce institutional barriers

The teaching materials in the electronic format such as electronic textbooks, study guides, tests and many more can be uploaded and downloaded by the students and teachers easily.

The screenshot displays the IBTE Elevate LMS interface. The top navigation bar includes the logo, a search bar, and a 'Log In' button. Below the navigation bar, there is a 'Welcome to IBTE Elevate' message and a large banner featuring the IBTE Elevate logo and images of students in a laboratory setting. A 'Site announcements' section is visible, along with a 'Navigation' menu. At the bottom, there is a blue banner for an e-forum titled 'E-FORUM: MANAGING PANDEMIC CHALLENGES AND OPPORTUNITIES OF TVET IN THE ERA OF DIGITALISATION' with various national flags.

## Online Platform

Microsoft Teams, Zoom, Google Meet and other platforms were used for the interaction between the instructors and students such as the creation of webinar rooms.



The banner at the bottom of the slide features the SEAMEO VOTEC logo on the left, followed by the text 'E-FORUM: MANAGING PANDEMIC CHALLENGES AND OPPORTUNITIES OF TVET IN THE ERA OF DIGITALISATION' in the center, and a row of national flags on the right.

# PPP Initiatives

## Devices and Donation Drive

**Bantu Kami Bantu Pelajar Kitani.**  
Bantu kami mencapai 70,000GB!  
Tap SMS  
**EDUPACK**  
1/2/5/10/15  
20/50/100  
Hantar ke  
**38111**

**DONATE DATA**  
Progressif and the Ministry of Education have identified students in need of gaining access to online learning, so we are providing them with SIM Cards with 10GB of data so they can learn from the safety of their homes.

For every \$30 received = 1 SIM card with 10GB data  
For every \$10 received = 5GB of Data Add-On

**How to Donate Data**

**Progressif Website**  
Pay monthly using VISA / Mastercard / AMEX  
store.progressif.com/donate-data-campaign

**Progressif PAY or BIDD Online**  
You can donate through Progressif PAY or BIDD Online and Bill to the biller.

Select paper: Domestic Data  
Reference: Name of Donor  
Reference: Phone number

**Banker Bank Transfer**  
Transfer your donation via Banker Online or ATM/CDM  
Account number: 02-00-105-480329  
Account name: Progressif Sdn/Bhd Berhad

**SMS (For Progressif users only)**  
DATAIDU10/10/10/20/50/100 and send to 38222

Scan for more information

**Donation drop-off location**  
IBTE  
Plant Engineering Block, Jelfi  
Bukitlah Campus, Kuala Belait

**WE NEED COMPUTERS, LAPTOPS & TABLETS**  
**LET'S MAKE AN IMPACT TOGETHER**  
**DONATION DRIVE TO SUPPORT ONLINE LEARNING**

Make a difference by donating new or used working computers, laptops and tablets to students in need and support them in their online learning!

**Opening hours**  
FROM 13<sup>th</sup> APRIL - 14<sup>th</sup> MAY  
MONDAY - THURSDAY & SATURDAY 8:30 - 12:00 PM 2:00 - 4:00 PM  
Ramadhan Hours Monday - Thursday & Saturday 8:30 am - 1:00 pm

**Please make sure that your equipment meets the minimum specifications:**

**Minimum specifications for computers & laptops**  
Processor 2.0GHz  
Memory 4GB RAM  
Hard Disk 200 GB  
Operating System Win 10 / 8.1  
Graphics At least 128MB Graphics Memory  
Network Wireless Connectivity  
Others Keyboard, Built-in Camera, Speaker & Microphone in working condition

**Minimum specifications for tablets**  
Operating System Android 5.0 or above  
IOS 11 or above

For more information, contact us at 736 2955 / 741 0106 / 741 0107 / 741 0108 (during working hours) or email us at info@ati.gov.bn.

**E-FORUM: MANAGING PANDEMIC CHALLENGES AND OPPORTUNITIES OF TVET IN THE ERA OF DIGITALISATION**  
SEAMEO VOTEC "Preparing TVET for industry 4.0"

## Collaboration with Partners



From this opportunity, TVET institutions can be an important partner and build a bridge between education and business while enhancing students' knowledge, competencies and skills for future work and employment demand. Final-year students also can do a practical or internship in the health and safety areas



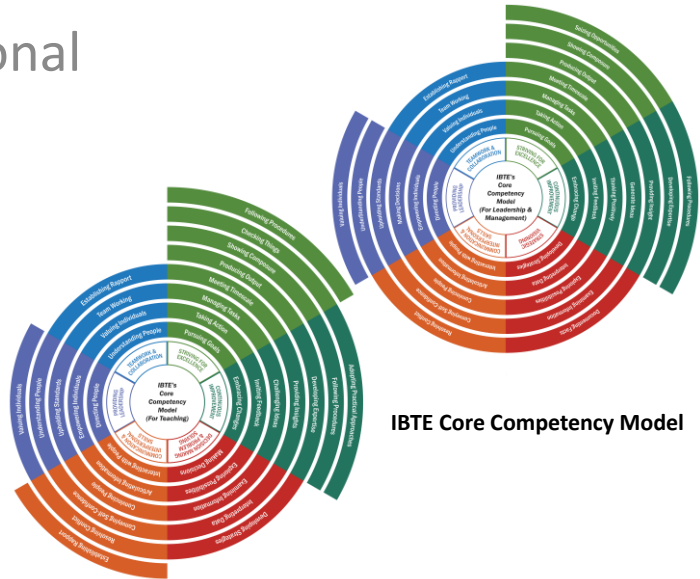
**E-FORUM: MANAGING PANDEMIC CHALLENGES AND OPPORTUNITIES OF TVET IN THE ERA OF DIGITALISATION**  
SEAMEO VOTEC "Preparing TVET for industry 4.0"



# Continuous Professional Development (CPD)

TVET institutions need to shift from conventional teaching methods to online learning in response to the lockdown.

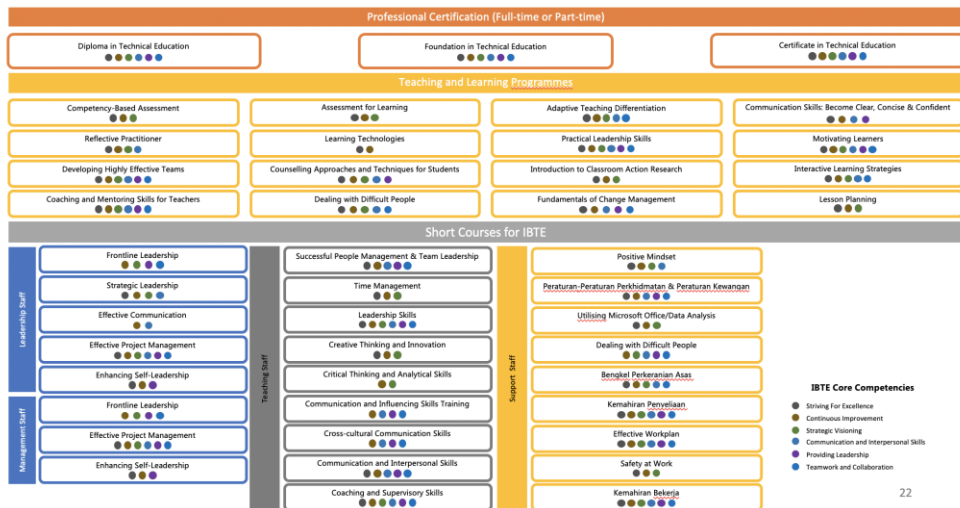
This ad hoc response dramatically changes the teaching method used by instructors and they need to adapt to new teaching mediums.



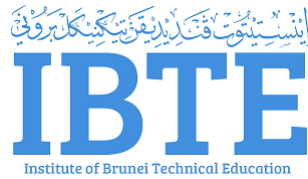
IBTE Core Competency Model



## TVET Academy Roadmap



# Question #3



What are some Trends in Digital TVET that are suitable to implement in your country or institution?



IR4.0



Innovative Teaching & Learning



AR, VR & Smart Classrooms



Digital Content Development



## Opportunities (Silver Lining)



Industry Revolution 4.0 and Digitalisation initiatives – accelerated

Pandemic is a dress rehearsal for the Fourth Industrial Revolution



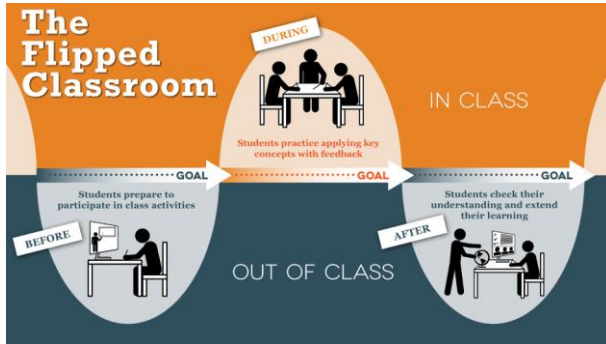
To harness the technology of Virtual Reality (VR) and Augmented Reality (AR) – simulations



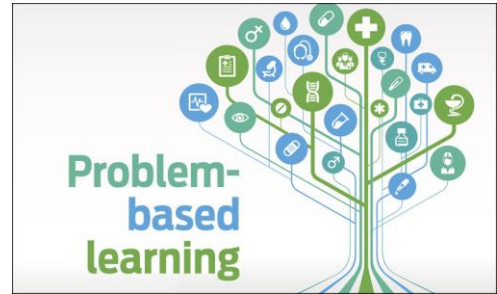
Smart Classrooms



## Opportunities (Silver Lining)



Innovative Teaching and Learning as well as assessment – blended and flexible delivery systems



## Opportunities (Silver Lining)



Development of Digital Contents and to prepare for digital ready curriculum



## Question #4

What can **Governments** do ensure a **resilient TVET System** that continues to produce a skilled workforce for the post-pandemic labour market?



Government Role




Investments



Strengthen Industry Partnership



CPD and LLL

  
**IBTE**  
 Institute of Brunei Technical Education



E-FORUM: MANAGING PANDEMIC CHALLENGES AND OPPORTUNITIES OF TVET IN THE ERA OF DIGITALISATION



## Resilient TVET Systems – WON Approach

The government's key role in ensuring that youths remain employable in the coming future.

Investing in youth employability will allow to be economically viable while reducing the social costs of unemployment.



Government



E-FORUM: MANAGING PANDEMIC CHALLENGES AND OPPORTUNITIES OF TVET IN THE ERA OF DIGITALISATION



## Resilient TVET Systems – WON Approach

1. Facilitate and support initiative to strengthen TVET institutions with industry partners (Government, GLCs, Private)



2. Invest in and strengthen the digital infrastructure (including devices and facilities)



## Resilient TVET Systems – WON Approach

3. Budget allocation for enhancing the digital competencies of TVET trainers



4. Invest in Labour Market Information System (LMIS)



to identify future trends in skills and work post-pandemic as well as before the Fourth Industrial Revolution - Lacking LMIS makes it difficult for TVET stakeholders to examine the short- and long-term impact of the COVID-19 crisis.



## Resilient TVET Systems – WON Approach

5. Promote lifelong learning (upskilling and reskilling) which focuses on encouraging TVET students to embrace e-learning as it will be a part of the lifelong learning experience

**Reskilling**



**Upskilling**



**Thank You !**

